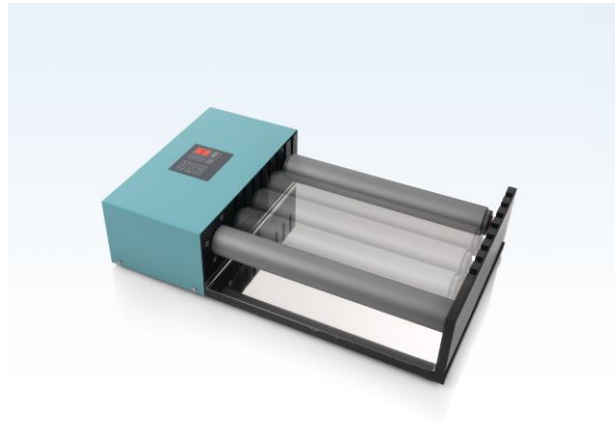


LABINCO LD209350 Rolling Bench

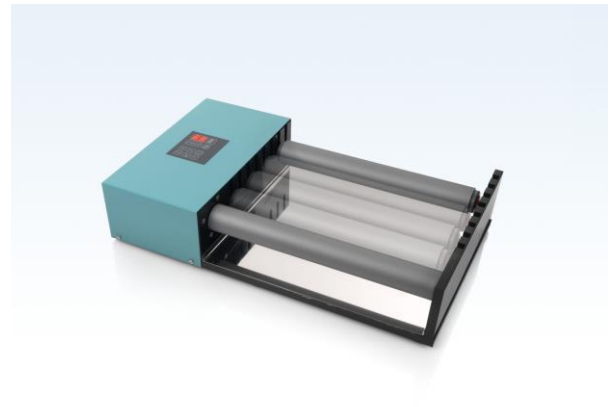
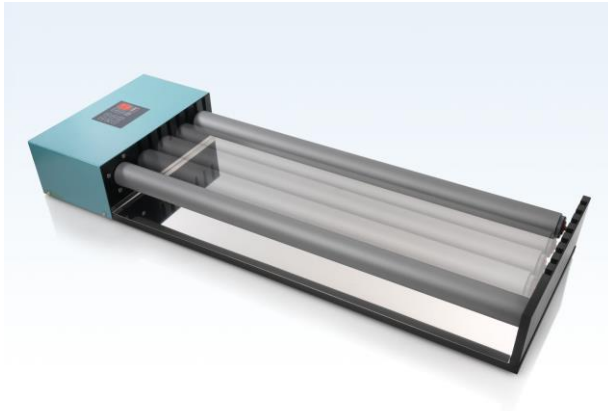
350 mm long rolls, Ø 46 mm.



Technical data

| | |
|--|-------------------------------|
| Number of rolling positions | 1 up to 4 |
| rolling quantity max. | 10 kg |
| Motor rating input | 75W |
| Motor rating output | 50 W |
| Speed display | digital |
| Speed range | 1-99 rpm |
| Timer display | digital 1s. up to 99h 59m 59s |
| Heat output | - |
| Heating rate | - |
| Heating temperature range | - |
| Heat control | - |
| Heat control accuracy | - |
| Speed control | digital |
| Adjustable safety circuit min. | - |
| Adjustable safety circuit max. | - |
| Connection for ext. temperature sensor | - |
| Control accuracy with sensor | - |
| Temperature constancy in medium | - |
| Set-up plate material | Steel with PE coated |
| Set-up dimensions | 12 up to 2150 mm |
| Dimensions (W x D x H) | 550 x 350 x 130 mm |
| Weight | 8.4 kg |
| Permissible ambient temperature | 5 - 50 °C |
| Permissible relative humidity | 80 % |
| Protection class according to DIN EN 60529 | IP 42 |
| RS 232 interface | - |
| Product number | 20903 |
| Voltage | 220 - 230 V |
| Frequency | 50/60 Hz |
| Power input | 100W |

LABINCO NEW MODEL LD209 / WITH DIGITAL TIMER / 1 RPM up to 99 RPM



Rolling benches with standard 2 rolls Ø 46MM, one roll is driven, extra rolls available on request.

| Model | Cat. Number | Description | Dimensions | | | Weight |
|---------------------------|-------------|------------------------|------------|---------|---------|---------|
| LD-209350 | 209350 | With 2 rolls of 350 mm | D 550mm | W 350mm | H 130mm | 8,4 kg |
| LD-209450 | 209450 | With 2 rolls of 450 mm | D 650mm | W 350mm | H 130mm | 9,4 kg |
| LD-209550 | 209550 | With 2 rolls of 550 mm | D 750mm | W 350mm | H 130mm | 10,5 kg |
| LD-209650 | 209650 | With 2 rolls of 650 mm | D 850mm | W 350mm | H 130mm | 11,5 kg |
| LD-209750 | 209750 | With 2 rolls of 750 mm | D 950mm | W 350mm | H 130mm | 12,5 kg |

Operating instructions ; Carefully unpack the unit and take off all packing materials. Choose a flat table or other suitable area for placing the bench. Check the model and catalog number indication at the rear. Check the line voltage in the room with the specified voltage on the label; this is standard 230 volts 50/60 HZ. Plug the line-plug into a suitable wall contact, with earth. Switch on the main switch on the backside. Pilot-lamp will light green if the bench is switched on. You can setting the speed with the knob up or down to 1-99 RPM ,and the electronic timer from 1-59 min ,and 0-99 hrs. (see page 2). This bench is equipped with standard 2 rolls diam. Ø 46mm , extra rolls available on request. One roll is driven. You can easily place maximal 5 rolls Ø 46mm on the rolling benches. The first roll is driven, and the next roll is driven with the bottle or tube of the first roll, and the next also.... etc. The minimal diam. is 12 mm up to...**But maximal 10 Kilogram.**

LABINCO BV

P.O.BOX 3259 4800DG BREDA THE NETHERLANDS
 ZINKSTRAAT 64 4823AC BREDA THE NETHERLANDS
 TEL;0031(0)76-5417582 FAX;0031(0)76-5420173
[Email; Info@labinco-bv.com](mailto:Info@labinco-bv.com) <http://www.labinco-bv.com>