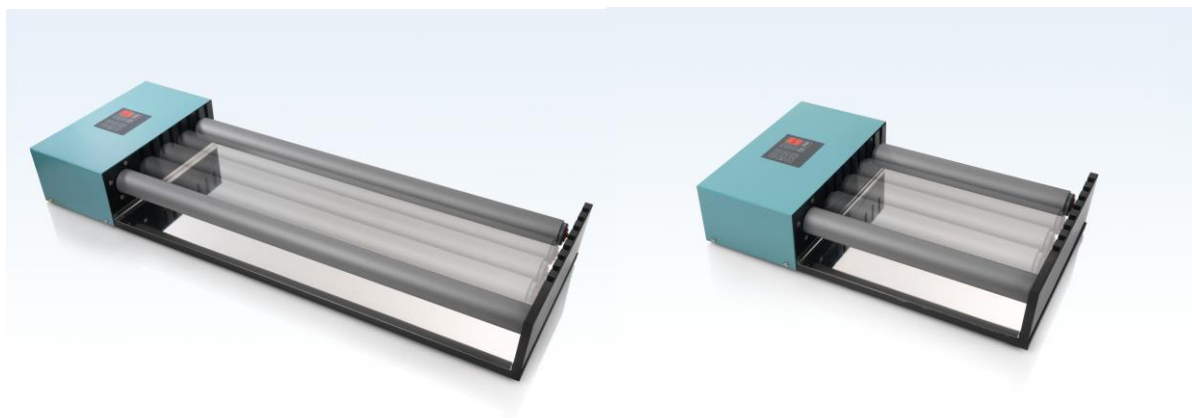


LABINCO NEW MODEL LD209 / WITH DIGITAL TIMER / 1 RPM up to 99 RPM



Rolling benches with standard 2 rolls Ø 46MM, one roll is driven, extra rolls available on request.

Model	Cat. Number	Description	Dimensions	Weight
LD-209350	209350	With 2 rolls of 350 mm	D 550mm W 350mm H 130mm	8,4 kg
LD-209450	209450	With 2 rolls of 450 mm	D 650mm W 350mm H 130mm	9,4 kg
LD-209550	209550	With 2 rolls of 550 mm	D 750mm W 350mm H 130mm	10,5 kg
LD-209650	209650	With 2 rolls of 650 mm	D 850mm W 350mm H 130mm	11,5 kg
LD-209750	209750	With 2 rolls of 750 mm	D 950mm W 350mm H 130mm	12,5 kg

Operating instructions ; Carefully unpack the unit and take off all packing materials. Choose a flat table or other suitable area for placing the bench. Check the model and catalog number indication at the rear. Check the line voltage in the room with the specified voltage on the label; this is standard 230 volts 50/60 HZ. Plug the line-plug into a suitable wall contact, with earth. Switch on the main switch on the backside. Pilot-lamp will light green if the bench is switched on. You can setting the speed with the knob up or down to 1-99 RPM ,and the electronic timer from 1-59 min ,and 0-99 hrs. (see page 2). This bench is equipped with standard 2 rolls diam. Ø 46mm , extra rolls available on request. One roll is driven. You can easily place maximal 5 rolls Ø 46mm on the rolling benches. The first roll is driven, and the next roll is driven with the bottle or tube of the first roll, and the next also.... etc. The minimal diam. is 12 mm up to...**But maximal 10 Kilogram.**

LABINCO BV

P.O.BOX 3259 4800DG BREDA THE NETHERLANDS

ZINKSTRAAT 64 4823AC BREDA THE NETHERLANDS

TEL;0031(0)76-5417582

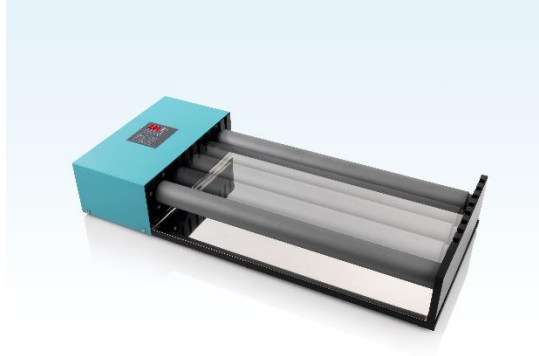
FAX;0031(0)76-5420173

[Email; Info@labinco-bv.com](mailto:Info@labinco-bv.com)

<http://www.labinco-bv.com>

LABINCO LD209550 Rolling Bench

550 mm long rolls, Ø 46 mm.



Technical data

Number of rolling positions	1 up to 4
rolling quantity max.	10 kg
Motor rating input	75W
Motor rating output	50 W
Speed display	digital
Speed range	1-99 rpm
Timer display	digital 1s. up to 99h 59m 59s
Heat output	-
Heating rate	-
Heating temperature range	-
Heat control	-
Heat control accuracy	-
Speed control	digital
Adjustable safety circuit min.	-
Adjustable safety circuit max.	-
Connection for ext. temperature sensor	-
Control accuracy with sensor	-
Temperature constancy in medium	-
Set-up plate material	Steel with PE coated
Set-up dimensions	12 up to 2150 mm
Dimensions (W x D x H)	750 x 350 x 130 mm
Weight	10.5 kg
Permissible ambient temperature	5 - 50 °C
Permissible relative humidity	80 %
Protection class according to DIN EN 60529	IP 42
RS 232 interface	-
Product number	20905
Voltage	220 - 230 V
Frequency	50/60 Hz
Power input	150W