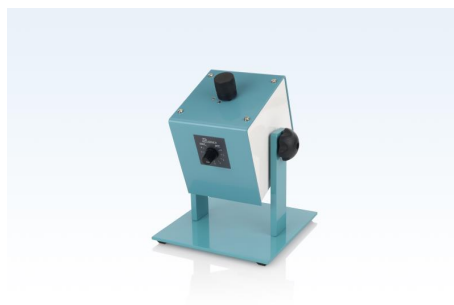


LABINCO L29 Large Test-Tube Rotator

Variable speed



Technical data

Number of mix positions	1 for max 3 disks
Mixing quantity max.	2 kg
Motor rating input	40W
Motor rating output	35 W
Speed display	analog
Speed range	1-50 rpm
Timer display	-
Heat output	-
Heating rate	-
Heating temperature range	-
Heat control	-
Heat control accuracy	-
Speed control	analog
Adjustable safety circuit min.	-
Adjustable safety circuit max.	-
Connection for ext. temperature sensor	-
Control accuracy with sensor	-
Temperature constancy in medium	-
Set-up plate material	St.st. Disk, Steel/nylon clamps
Set-up spring clip dimensions	see www.labinco-bv.com
Dimensions (W x D x H)	200 x 200 x 270 mm
Weight	3.6 kg
Permissible ambient temperature	5 - 40 °C
Permissible relative humidity	80 %
Protection class according to DIN EN 60529	IP 42
RS 232 interface	-
Product number	29000
Voltage	100 - 230 V)
Frequency	50/60 Hz
Power input	60W

LABINCO L29 Large Test-Tube Rotator

Variable speed



Description

The Labinco model L29 "TEST TUBE ROTATOR" is an instrument that provides serial inclined isolation of test tubes, with diameter-range from 4 up to 45 mm. Aluminum and stainless steel construction.

Provided with dc motor up to 50 rpm, permits tube exchange while operating. Angle of inclined rotation can be continuously set between 90 and 27 degr. Comes with line-cord but without discs.

Operating instructions

Unpack Model L29 and carefully remove all packing material. After choosing proper table space you can make proper line-voltage connection to 100-230V, 50HZ line. You can start Model L29 by switching on power switch, the motor will run than as you can see from the drive nut. Choose the disc you need from the list. Unscrew the black plastic nut from the drive spindle. Place the disc in the proper fixed position and screw on the plastic nut. Tighten this nut rather strongly. You can choose the rotating angle by loosening the black tightening wheels on both sides and turning the motor-block to the right angle. Fasten the black tightening wheels. Now the unit is ready for use.

Labinco bv

P.O.BOX 3259 4800DG BREDA The Netherlands

Zinkstraat 64 4823AC BREDA The Netherlands

Tel; 0031(0)76-5417582

Fax; 0031(0)76-5420173

E-mail; info@labinco-bv.com internet; www.labinco-bv.com