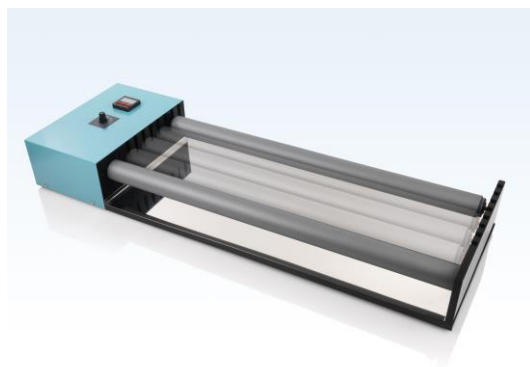


LABINCO L209750 Rolling Bench

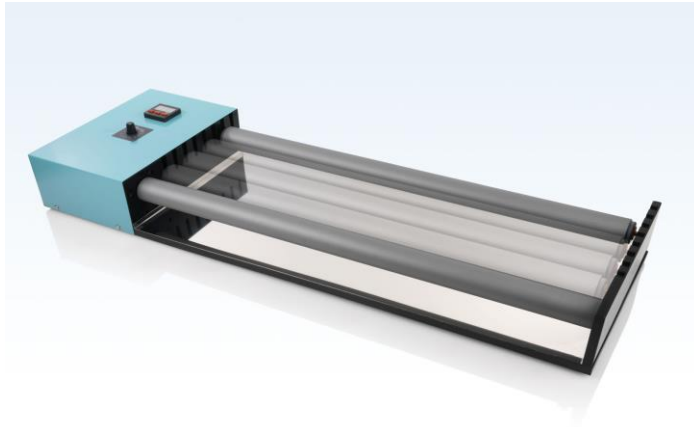
750 mm long rolls, with strong motor



Technical data

| | |
|--|-------------------------------|
| Number of rolling positions | 1 up to 4 |
| rolling quantity max. | 30 kg |
| Motor rating input | 100W |
| Motor rating output | 75 W |
| Speed display | analog |
| Speed range | 1-240 rpm |
| Timer display | digital 1s. up to 99h 59m 59s |
| Heat output | - |
| Heating rate | - |
| Heating temperature range | - |
| Heat control | - |
| Heat control accuracy | - |
| Speed control | analog |
| Adjustable safety circuit min. | - |
| Adjustable safety circuit max. | - |
| Connection for ext. temperature sensor | - |
| Control accuracy with sensor | - |
| Temperature constancy in medium | - |
| Set-up plate material | Steel with PE coated |
| Set-up dimensions | 12 up to 2150 mm |
| Dimensions (W x D x H) | 980 x 350 x 130 mm |
| Weight | 12.5 kg |
| Permissible ambient temperature | 5 - 50 °C |
| Permissible relative humidity | 80 % |
| Protection class according to DIN EN 60529 | IP 42 |
| RS 232 interface | - |
| Product number | 20975 |
| Voltage | 220 - 230 V |
| Frequency | 50/60 Hz |
| Power input | 150W |

LABINCO MODEL L209 / WITH TIMER / 5 RPM UP TO 240 RPM



Description:

Rolling benches with standard 2 rolls \varnothing 46MM, one roll is driven, extra rolls available on request.

| Model | Cat. Number | Description | Dimensions | | | Weight |
|--------------------------|-------------|------------------------|------------|---------|---------|---------|
| L-209350 | 209350 | With 2 rolls of 350 mm | D 580mm | W 350mm | H 130mm | 8,4 kg |
| L-209450 | 209450 | With 2 rolls of 450 mm | D 680mm | W 350mm | H 130mm | 9,4 kg |
| L-209550 | 209550 | With 2 rolls of 550 mm | D 780mm | W 350mm | H 130mm | 10,5 kg |
| L-209650 | 209650 | With 2 rolls of 650 mm | D 880mm | W 350mm | H 130mm | 11,5 kg |
| L-209750 | 209750 | With 2 rolls of 750 mm | D 980mm | W 350mm | H 130mm | 12,5 kg |

Operating instructions: Carefully unpack the unit and take off all packing materials. Choose a flat table or other suitable area for placing the Rolling bench. Check the model and catalog number indication at the rear. Check the line voltage in the room with the specified voltage on the label, this is standard 230 volts 50/60 HZ. Plug the line-plug into a suitable wall contact, with earth. Switch on the main switch. Pilot-lamp will light green if the bench is switched on. You must first set the knob 'start' on the timer 'on' before you can turn the speed setting with dial knob up to -240 RPM. You can set the timer with the knob PROG and set the time and then start. This bench is equipped with standard 2 rolls diam. \varnothing 46 mm, extra rolls available on request.

One roll is driven. You can easily place maximal 5 rolls on the rolling benches.

The first roll is driven, and the next roll is driven with the bottle or tube of the first roll, and the next also.... etc.

The minimal diam. is 12 mm up to **But maximal 30 Kilogram**

LABINCO BV

P.O.BOX 3259 4800DG BREDA THE NETHERLANDS

ZINKSTRAAT 64 4823AC BREDA THE NETHERLANDS

TEL;0031(0)76-5417582

FAX;0031(0)76-5420173

[E-mail; Info@labinco-bv.com](mailto:Info@labinco-bv.com)

<http://www.labinco-bv.com>