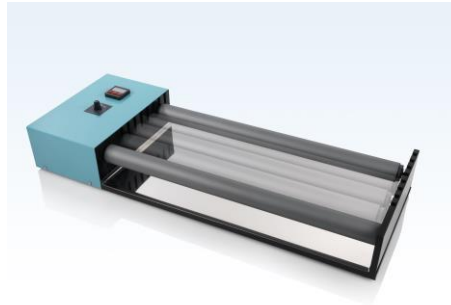


# LABINCO L209450 Rolling Bench

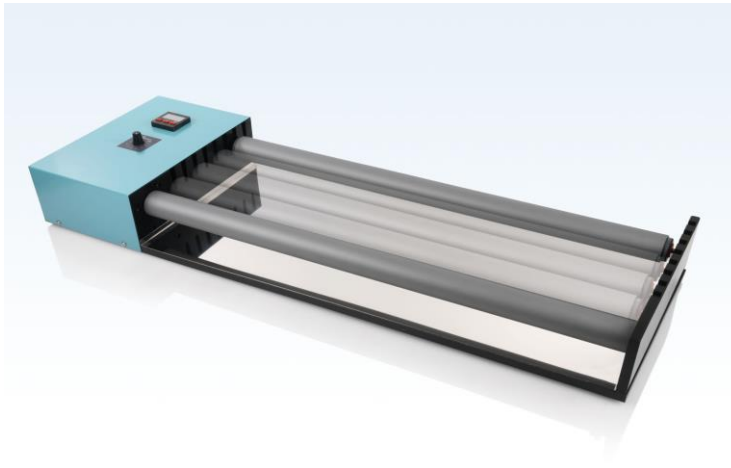
## 450 mm long rolls, with strong motor



### Technical data

Number of rolling positions	1 up to 4
rolling quantity max.	30 kg
Motor rating input	100W
Motor rating output	75 W
Speed display	analog
Speed range	1-240 rpm
Timer display	digital 1s. up to 99h 59m 59s
Heat output	-
Heating rate	-
Heating temperature range	-
Heat control	-
Heat control accuracy	-
Speed control	analog
Adjustable safety circuit min.	-
Adjustable safety circuit max.	-
Connection for ext. temperature sensor	-
Control accuracy with sensor	-
Temperature constancy in medium	-
Set-up plate material	Steel with PE coated
Set-up dimensions	12 up to 2150 mm
Dimensions (W x D x H)	680 x 350 x 130 mm
Weight	9.4 kg
Permissible ambient temperature	5 - 50 °C
Permissible relative humidity	80 %
Protection class according to DIN EN 60529	IP 42
RS 232 interface	-
Product number	20945
Voltage	220 - 230 V
Frequency	50/60 Hz
Power input	150W

**LABINCO MODEL L209 / WITH TIMER / 5 RPM**  
**UP TO 240 RPM**



**Description**

Rolling benches with standard 2 rolls Ø 46MM, one roll is driven, extra rolls available on request.

Model	Cat. Number	Description	Dimensions	Weight
<a href="#">L-209350</a>	209350	With 2 rolls of 350 mm	580x350x130mm (DxWxH)	8,4 kg
<a href="#">L-209450</a>	209450	With 2 rolls of 450 mm	680x350x130mm (DxWxH)	9,4 kg
<a href="#">L-209550</a>	209550	With 2 rolls of 550 mm	780x350x130mm (DxWxH)	10,5 kg
<a href="#">L-209650</a>	209650	With 2 rolls of 650 mm	880x350x130mm (DxWxH)	11,5 kg
<a href="#">L-209750</a>	209750	With 2 rolls of 750 mm	980x350x130mm (DxWxH)	12,5 kg

**Operating instructions** Carefully unpack the unit and take off all packing materials. Choose a flat table or other suitable area for placing the bench.

Check the model and catalog number indication at the rear. Check the line voltage in the room with the specified voltage on the label, this is standard 230 volts 50/60 HZ.

Plug the line-plug into a suitable wall contact, with earth. Switch on the main switch.

Pilot-lamp will light green if the bench is switched on. You must first set the knob 'start' on the timer 'on' before you can turn the speed setting with dial knob up to -240 RPM. You can set the timer with the knob PROG and set then the time and then start. This bench is equipped with standard 2 rolls diam. Ø 46 mm, extra rolls available on request.

One roll is driven. You can easily place maximal 5 rolls on the rolling benches.

The first roll is driven, and the next roll is driven with the bottle or tube of the first roll, and the next also.... etc.

The minimal diam. is 12 mm up to ..... **But maximal 30 Kilogram**

**LABINCO BV**

P.O.BOX 3259 4800DG

BREDA THE NETHERLANDS

ZINKSTRAAT 64 4823AC

BREDA THE NETHERLANDS

TEL;0031(0)76-5417582

FAX;0031(0)76-5420173

[E-mail; Info@labinco-bv.com](mailto:Info@labinco-bv.com)

<http://www.labinco-bv.com>