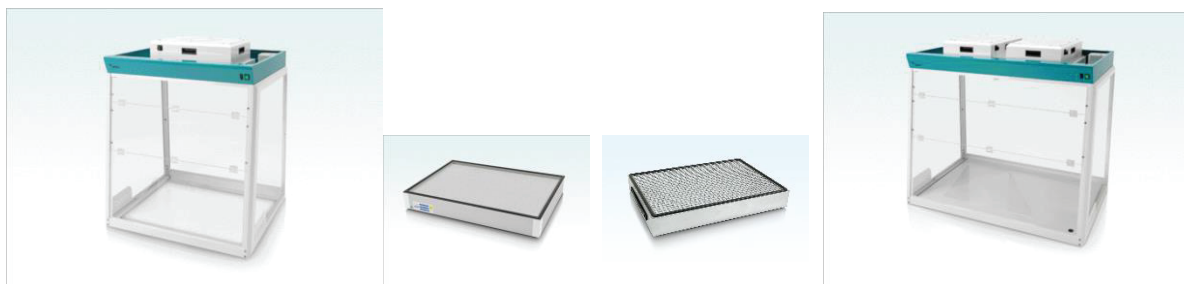


LABINCO LF 66/69/612/615 DUCTLESS FUME HOODS

FILTRATION MODULES *(manufactured in the Netherlands)*



***4 models with working widths of 60/90/120/150 cm and 1 / 2 or 3 modules.**

***Standard equipped with socket and lighting.**

***Very strong housing and 6 millimeter thick clear panels.**

***Adjustable speed and anemometer for flow measurement.**

***Melamine worktop with collecting tank on request**

***HEPA filter on request**

***CARBON filter on request.**

***Trolley on request.**

***You can choose on the next front types;**

*2 openings for the hands in the window at the front.

*Trapezoid opening over almost the entire width.

*Harmonica front for place bigger products into the filtration modules with 2 hands or trapezoid opening.

User's optimal protection:

* Vapors are confined in the manipulation enclosure after being eliminated through the molecular filter.

*Silent electric fan to guarantee the correct flow according to E.U. specifications.

*Recirculating filter box with 1 or 2 or maximal 3 filter modules. You can place on each module one HEPA filter and one CARBON filter.

Why use an enclosure with recirculating air filtration system?

When using chemicals, your health might be in danger due to the emanation of harmful and toxic vapors. To protect yourself and your close environment, you must manipulate your products in an enclosure using recirculating air filtration equipped with a molecular filter.

Why choose an enclosure LABINCO using recirculating air filtration?

Made in the NETHERLANDS, the fume hoods LABINCO stand out by a high manufacturing quality and finish. Fume hoods LABINCO provide the user a secured work space for the repetitive manipulations of small chemicals quantities. The dangerous vapors are confined in the enclosure, then are cleansed while entering the active coal-based filter. Finally, dangerous vapors are rejected in the atmosphere without danger for the environment. Thus, the user's health is protected. The LABINCO filter system is made of quality active charcoal according to your needs. It can be fit for a specific product. The active coal-based filters replacement requires only a few minutes.

Standardization:

NF X 15-211 French norm (September 1996): NF X 15-211 French norm is the most demanding regulation today. It guarantees to the user a full safety allowing him to focus on his manipulations. Enclosures for toxic LABINCO using recirculating air filtration are classified according to 2 security levels:

Enclosures LABINCO using recirculating air filtration belongs to the class 2 enclosure without safety reserve, the most common.

To be in accordance with this standard, fume hoods filtration LABINCO have to meet multiple criteria (summary):

- the enclosure must be provided with a ventilation device to maintain the air speed with a rate between 0,4 m/s and 0,6 m/s.
- rejection, downstream the filter, of 50% of the VME (mean value of exhibition) of toxics treated in the enclosure in the duration of normal filter use.
- the enclosure must have been tested by an approved and independent laboratory.
- the class 2 enclosures have to allow to treat products having a VME index superior or equal to 10 ppm.
- the class 2 enclosures have to be equipped with a sound or visual alarm activated every working 60 hours and also a sampling outlet device.
- the class 2 enclosures must not reject more than 50% of the VME downstream the filter during the detection test.

LABINCO fume hoods are controlled according to quality process and procedures CE at the end of the assembly line and before their shipping to the user in order to assure a perfect functioning and efficiency.

The user is responsible for regular checking of the filters and replacement is recommended at least once a year

Specifications: 230V 50/60HZ 1 position 75 Watt / 2 position 150 Watt / 3 position 225 Watt.

<u>LF 66</u>	60 x 80 x 125 cm (Width x depth x height)	one module	Kg
<u>LF 69</u>	90 x 80 x 125 cm (Width x depth x height)	one module	Kg
<u>LF 612</u>	120 x 80 x 125 cm (Width x depth x height)	two modules	Kg
<u>LF 615</u>	150 x 80 x 125 cm (Width x depth x height)	three modules	Kg
<u>LF 620</u>	HEPA filter		
<u>LF 621</u>	CARBON filter		
<u>Trolley</u>	(LF 661 for LF 66) (LF 691 for LF 69) (LF 6121 for LF 612) (LF 6151 for LF 615)		
<u>LF 630 Adapter</u>	if you're using two filters on one module.		

LABINCO BV

P.O. BOX 3259 4800DG BREDA THE NETHERLANDS

ZINKSTRAAT 64 4823AC BREDA THE NETHERLANDS

TEL;0031(0)76-5417582

FAX;0031(0)76-5420173

[E-mail;info@labinco-bv.com](mailto:info@labinco-bv.com)

<http://www.labinco-bv.com>